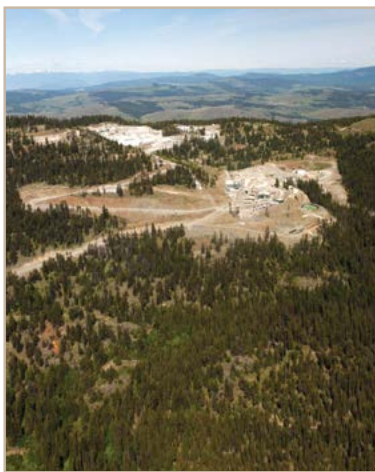




# The Socioeconomic Legacy of Kettle River-Buckhorn

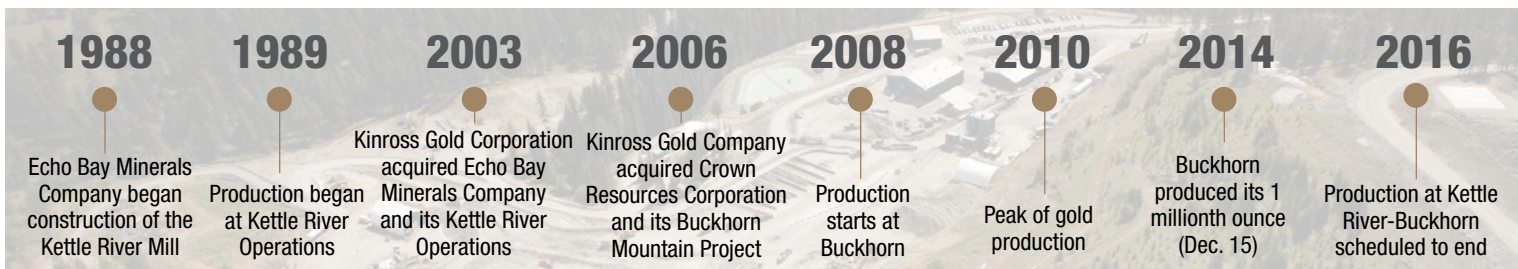
Kinross Gold Corporation’s Kettle River-Buckhorn gold mine and mill has been an important source of jobs and income for the residents of Ferry and Okanogan counties in northeast Washington. Also, the operation has been a significant contributor to quality of life in the area through its legacy of responsible values-based mining, involvement in the community, and the additional jobs and economic contribution through local businesses and taxes.



## Local Economic Impact in Ferry and Okanogan Counties

<b>1,220,739</b>	Total expected ounces of gold produced (2008-2016)
<b>85%</b>	Approximate percentage of employees who live in Ferry or Okanogan counties
<b>218</b>	Annual average local resident direct jobs, including trucking and hauling contractor (2011-2015)
<b>448</b>	Total annual average number of local jobs (direct, indirect, and induced) (2011-2015)
<b>\$138 million</b>	Total cumulative local resident direct payroll, including trucking and hauling contractor (2011-2015)
<b>\$193 million</b>	Total cumulative local resident payroll (direct, indirect, and induced) (2011-2015)
<b>\$1.5 million</b>	Total cash charitable contributions to local nonprofits (2007-2015)
<b>154</b>	Approximate number of local nonprofits supported by Kinross cash contributions (2007-2015)
<b>\$96 million</b>	Total local spending on goods and services (2011-2015)
<b>200</b>	Approximate number of local business vendors serving Kettle River-Buckhorn (2007-2015)
<b>\$1.4 million</b>	Total tax payments to Ferry County and its local tax districts (2007-2015)
<b>\$8.6 million</b>	Total tax payments to Okanogan County and its local tax districts (2007-2015)

## Historical Timeline: Kettle River–Buckhorn



# Jobs and Income Impacts

The positive economic impact of Kettle River-Buckhorn occurs at three levels:

## Direct Impacts

Kettle River-Buckhorn's own employment and payroll

## Indirect Impacts

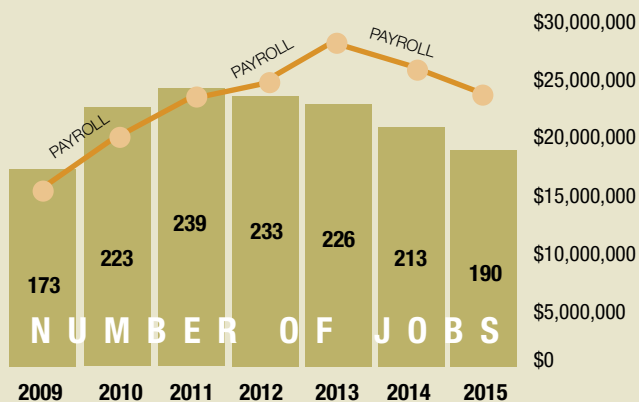
Jobs and income generated in businesses that provide goods and services to Kettle River-Buckhorn

## Induced Impacts

Jobs and income created as Kettle River-Buckhorn employees and employees of its contractors and vendors spend their payroll dollars in the local economy

### Annual Direct Employment and Payroll

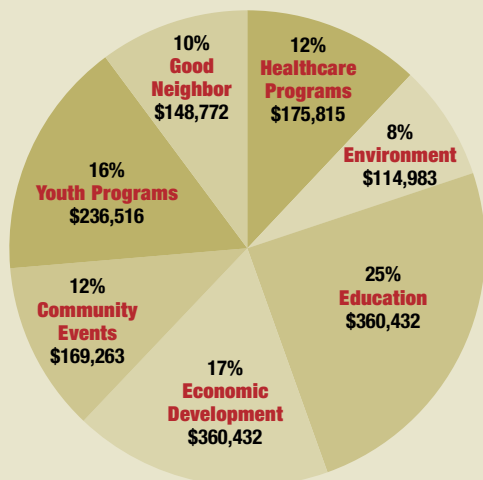
(Excluding On-Site Trucking Contractor Payroll)



Note: Includes regular and premium salaries, overtime, vacation pay, bonuses, signing bonuses, severance, and relocation allowance.  
Source: Kinross Kettle River-Buckhorn.

### Cash Contributions to Local Nonprofits (2007-2015)

Total Cash Contributions  
**\$1,462,626**



# Other Legacy Impacts

## Power

**\$11 million** in payments to Ferry County's PUD#1 and its single largest consumer of power — approximately one-third (or 4MW) of its average load (12MW) (2009-2015)

## Public Safety

**\$585,600** paid to the Ferry County Sheriff Department to support a public safety officer position (2007-2015)

## Road Improvements

**\$728,400** paid to the Ferry County Commissioners and Ferry County Public Works for road improvements (2007-2015)

## Environmental Stewardship

Over **\$5 million** in support of local stewardship programs, such as watershed restoration, public land access, and education and outreach programs (2007-2015), as well as annual support of **\$370,000** for ongoing mitigation projects

## Education Funding

Annual state and federal education funding of **\$1 million** for approximately **100 students** of Kettle River-Buckhorn employee families. In addition, **\$360,000** donated to local education programs in addition to state and federal funding (2007-2015)

## Local Scholarships

**\$28,500** in scholarships paid to local students (2013-2016)

## Employee Volunteerism and Community Support

Approximately **64 percent** of Kettle River-Buckhorn employees make cash contributions to local nonprofits, approximately **41 percent** volunteer locally, and approximately **42 percent** donate material goods to more than 70 nonprofits



## Want to know more?

Visit our website:

[www.kinross.com/operations/operation-kettle-river-buckhorn-usa.aspx](http://www.kinross.com/operations/operation-kettle-river-buckhorn-usa.aspx)



Like us on Facebook: **KinrossKRB**